

**File Name:** carefree eclipse awning manual.pdf

**Size:** 4240 KB

**Type:** PDF, ePub, eBook

**Category:** Book

**Uploaded:** 12 May 2019, 21:26 PM

**Rating:** 4.6/5 from 721 votes.

**Status:** AVAILABLE

Last checked: 10 Minutes ago!

**In order to read or download carefree eclipse awning manual ebook, you need to create a FREE account.**

**[Download Now!](#)**

eBook includes PDF, ePub and Kindle version

[Register a free 1 month Trial Account.](#)

[Download as many books as you like \(Personal use\)](#)

[Cancel the membership at any time if not satisfied.](#)

[Join Over 80000 Happy Readers](#)

### Book Descriptions:

We have made it easy for you to find a PDF Ebooks without any digging. And by having access to our ebooks online or by storing it on your computer, you have convenient answers with carefree eclipse awning manual . To get started finding carefree eclipse awning manual , you are right to find our website which has a comprehensive collection of manuals listed.

Our library is the biggest of these that have literally hundreds of thousands of different products represented.



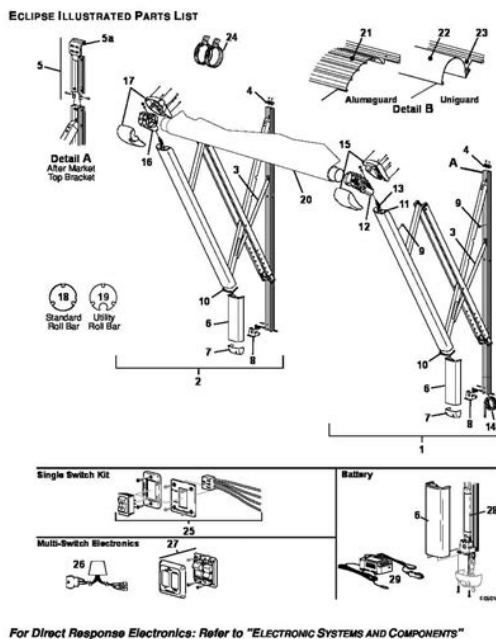
## Book Descriptions:

### carefree eclipse awning manual



These include social distancing, along with other best practices to help protect and support our production teams and you, our valued customers. You may experience delays due to the number of orders being processed and extended lead times for shipping so please allow up to 3 weeks of additional time for orders to be produced, and shipped during this extraordinary time. Likewise we are experiencing a significant increase in our call volumes, so we apologize in advance for longer than usual hold times and delayed return of email correspondence. Our teams here at Carefree sincerely thank you and wish you and your family safe travels and health. Just select your product on the left to quickly access this information. Roll the privacy panels up for fresh air, roll them down for complete privacy. Great for relaxing, dining or extra storage. The canopies are housed in an aluminum case that easily blends in with the coach roof. Nothing to lose! Fits in the utility slot of your awning roll bar. Easy to put on and take off. They can stay in the roll bar and roll up with our awning. Essential for a Screen Room or AddARoom. The best value screen room on the market! Use and enjoy your awning twice as much with the Breezeway Screen Room. Fits Carefree Campout and Freedom awnings from 35 meters. Fits Carefree Campout and Freedom awnings from 35 meters. More Exclusive Features than Competitive Awnings. More Exclusive Features than Competitive Awnings. Housed in a White aluminum case to blend into the interior of your RV. Outperforms all other low cost vinyl rooms. It's a great value in a quality room. The SunBlockers weather resistant openweave fabric cuts almost 85% of light to keep you cool and comfortable but it doesn't block your view! Best of all, it's bug free. Shatter and water resistant. Designed to provide a minimum of 3000 hours of life. Housed in a White aluminum case to blend into the interior of your RV. Perfect for picnics and relaxation. <http://enerjimakine.com/tsrm1/img/userfiles/early-childhood-operations-manual.xml>

- **carefree eclipse awning manual retract, carefree eclipse awning manual, carefree eclipse electric awning manual, carefree eclipse awning service manual, carefree eclipse awning manual 2017, carefree eclipse awning manual download, carefree eclipse awning manual instructions, carefree eclipse awning manual free, carefree eclipse awning manual 2016, carefree eclipse awning manual online, carefree eclipse awning manual template, carefree eclipse awning manual for sale.**



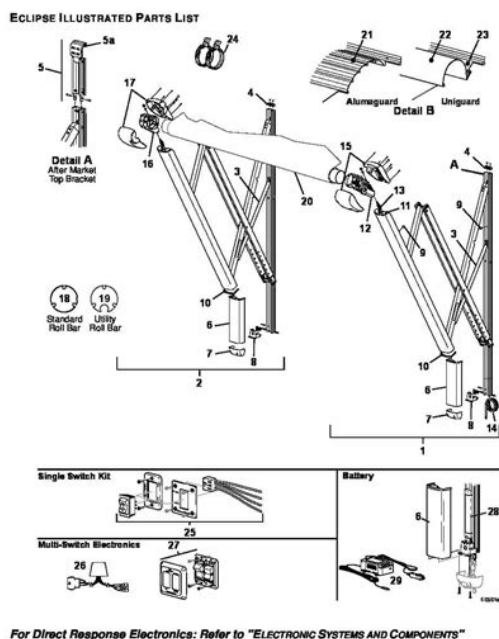
And when you're ready to hit the road again, it easily fits into a convenient storage bag. As the billowproof wormgear motor unrolls the canopy, the rafter arms glide up the vertical track on the side of the coach to deploy a stable, trusslike, overhead support. That's it! There's nothing to lock or latch. Carefree's exclusive wormgear drive motor locks the roller for travel and provides the greatest assurance of absolute protection against billowing. The arm set includes one interior operating switch. Direct Response and Remote Operation options are also available. Get custom color factory orders in just 72 hours! Ideal for mounting over slideouts and closeclearance doors rail to top of door, and for travel trailers with a minimum railto ground measurement of at least 8. The Eclipse has more features than any other 12V awning. Simply push and hold the button inside the RV to extend or retract the awning. Upgrading your Carefree, Dometic or Lippert manual awning to the ease of operation and security of 12 volt awning has never been easier. In many cases the upper mounting brackets use the same holes as the previous awning. The awning generally wires into an existing 12 volt light circuit for easy install. Add the proven reliability of the Direct Response System and the awning will roll up automatically in windy conditions. Until now, this was only available on awnings costing three times as much. All rights reserved. No part of this website may be reproduced in any form, by any means, without written permission from Shade Pro, Inc. Our payment security system encrypts your information during transmission. We don't share your credit card details with thirdparty sellers, and we don't sell your information to others. Please try again. Please try again. In order to navigate out of this carousel please use your heading shortcut key to navigate to the next or previous heading. <http://geojeoceanhotel.com/userfiles/20200928060502.xml>



In order to navigate out of this carousel please use your heading shortcut key to navigate to the next or previous heading. Register a free business account Please try your search again later. Click here to make a request to customer service. Contact seller for more information about this product. To calculate the overall star rating and percentage breakdown by star, we don't use a simple average. Instead, our system considers things like how recent a review is and if the reviewer bought the item on Amazon. It also analyzes reviews to verify trustworthiness. Please try again later. Sharon Forsyth 5.0 out of 5 stars Issue solved. The awning now goes in and out like new. Another crisis averted. We are also offering a NEW Curbside Pickup program at our locations for your convenience. Learn more and shop with our Curbside program here. Please turn it on so that you can experience the full capabilities of this site. Does not include plastic end cap covers. Does not include plastic end cap covers. Thanks for Subscribing. Details and procedures unique to a specific model are labeled appropriately. Thank you, for helping us keep this platform clean. The editors will have a look at it as soon as possible. All RVs for Sale Parts Superstore Content Pages Questions 18007554775 0 Menu Sell My RV NOW. Some restrictions apply. Simply add items to your cart and enter your shipping address to see if your order qualifies. CAREFREE ECLIPSE POWER AWNING ARMS BLACK FINISH 262942 Please enable JavaScript to load this Video. As the billowproof wormgear motor unrolls the canopy, the rafter arms glide up the vertical track on the side of the coach to deploy a stable, trusslike, overhead support. Push and hold the button to retract and the Eclipse will roll up tight against the coach. That's it! There's nothing to lock or latch.

Carefree's exclusive wormgear drive motor locks the roller for travel and provides the greatest assurance of absolute protection against billowing. For the best protection against rain, adjust one or both arms to their lowest setting. Choose from six quick adjustments per arm to get the perfect pitch for shade. Simply push and hold the button to retract the Eclipse from any pitch setting; there's no need to level the awning before you roll it up; the Eclipse self-levels. The 12v Hardwired Eclipse Arm Set must be wired into a 12v source inside the RV. Two switches are included, one exterior and one interior. Optional Electronics This system detects canopy motion and automatically retracts the awning when a certain level of movement is reached. You determine the sensitivity level on the control panel. Special Order Item Wireless Remote Control This handy option allows you to operate your awning from anywhere around your campsite. It only works with either the Direct Response or WindSmart options. For additional information, warranty information, color samples and hardware selection information, please visit the Carefree RV Awnings Website. Click on the type of vehicle, then click on Patio Awnings. This will open a new browser window. Simply close the new window to return here. FREQUENTLY BOUGHT TOGETHER The Carefree Eclipse is the only adjustable 12V power awning available. As the billowproof wormgear motor unrolls the canopy, the rafter arms

glide up the vertical track on the side of the coach to deploy a stable, trusslike, overhead support. Two switches are included, one exterior and one interior. \n\n Optional Electronics \n\n Item Direct Response Electronics This includes a motion detection system with easytouse controls. This system detects canopy motion and automatically retracts the awning when a certain level of movement is reached. Great Prices on All Models, Sizes and Colors of Carefree Awnings. On Sale at the PPL RV Parts Superstore.



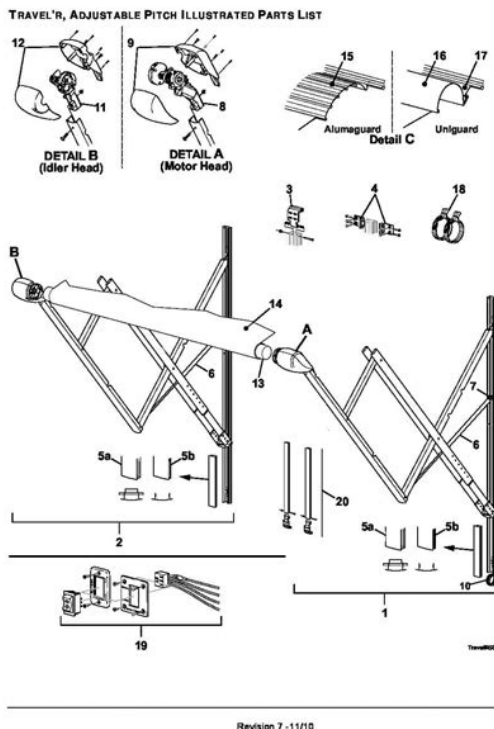
<https://www.informaquiz.it/petrgenesis1604790/status/flotaganis18052022-1723>

As the billowproof wormgear motor unrolls the canopy, the rafter arms glide up the vertical track on the side of the coach to deploy a stable, trusslike, overhead support. On Sale at the PPL RV Parts Superstore. Manufacturers Number for this Eclipse Direct Response Electronics is SR0036. The Eclipse automatically retracts when the canopy reaches a certain level of movement you determine the sensitivity level on the control panel. Manufacturers Number for this Eclipse Wireless Remote Option is SR0014. The total width specified is the width of the case. Great Prices on Carefree power visors and awnings. Carefree Superstore Great Prices. On Sale and ready to ship at the PPL RV Parts Superstore. All Rights Reserved, 1997 2020. Eclipse XLN uR imV eThe information contained in the Details and procedures unique to a Canopy Replacement. 2. For Universal Eclipse. 2. For Eclipse XL. 4. Installing the Tractioners. 6. Motor Replacement. 7. Replacing the Motor Awning Extended. 7. Removing the Spring. 11. Installing the Spring. 11. Replacing the Gas Shock. 12. Replacing the Arm Rollers. 13. Diagnostics. 14. Standard Electrical. 15. Auto Retract Systems. 18. Common Test Procedures. 20. Wiring Diagram Single Switch. 22. Wiring Diagram Multiple Switch. 22. Wiring Diagram WindSmart. 23. Wiring Diagram Direct Response. 24. Standard Service Procedures. 28. Programming the Remote Receiver. 28. Battery Replacement. 29. Standard Maintenance. 30. Fabric Care. 30. Arm Care. 30. Motor Maintenance. 30. Part Number Listing. 31. Arms Part Number Configuration. 31. Roller Part Number Configuration. 31. Illustrated Parts List. 32. Arms. 32. Electronics. 34. Printed in USA. May, 2009 Every effort has been made to ensure that the information presented in the document is accurate and N uR imV eThe information contained in this manual pertains to the current configuration of the models listed on the Carefree of Colorado Carefree of



Colorado agrees to allow the reproduction of this document for use with Carefree of ColoradoTip.

<http://asyasunger.com/images/callister-material-science-8th-edition-solution-manual.pdf>



A tip provides helpful suggestions. Safety Notes. Always disconnect battery or power source before working on or around the electrical system. Always wear appropriate safety equipment i.e. goggles. When using fasteners, use care to not over tighten. Soft materials such as fiberglass and aluminumEclipse Arms and Canopy OEM Installation Manual. Eclipse Arms and Canopy OEM Installation Manual Winnebago. Eclipse Arms Upgrade for OneTouch. Eclipse Owners Manual. Eclipse Owners Manual Winnebago. Eclipse Service Manual. Direct Response Installation Manual. Carefree of ColoradoTable of Contents. Carefree of Colorado. Service ManualThe pitch can be left in any position and the Eclipse will roll up completely! When the awning is rolled back out, it rolls out to the pitch setting previously set. The awning rollbar and arms are made from light weight, norust aluminum. The awning fabric is offered inN uR imV eTwo autoretract systems are used for the hardwired Eclipse awning, WindSmart discontinued and Direct. Response. The system may be installed as part of the original motorized awning installation or as an upgrade toAn autoretract system offer unique features not available with standard electronicsIt is not. Eclipse Patio Awning SpecificationsMaximum ExtensionLengthGas Shock. Gas Shock. Extend Actuation. Motorized roll up. Retract Actuation. Position ControlPower RequirementsCircuit Rating. Motor and controls are routed and hardwired into the vehicle's 12V system. Power Source. OR 14.4V NiCD Battery rechargeable discontinued. Battery Charger. Input 10VDC to 18VDC Time to Charge 2 2 Hours. Electrical override system external power source. Emergency Retract. Eclipse Patio Awning Options. Alumaguard Awning Wrap 3. Uniguard Awning Wrap 3. SunBlocker. WindSmart AutoRetract System 4 discontinuedRemote Control 5Carefree of ColoradoEnd Cap. End Cap. Roller Assembly. Motor. Detail A. Align SlotsN uR imV eAlign Slots. Alumaguard. Detail B. Upper Bracket. Uniguard.

<http://www.dolciariavarone.com/images/callaway-golf-watch-manual.pdf>



Detail C Trim Polycord Feeder. Detail D Use care not to scratch the side of the RV. Table of Contents. Service Manual If Tip Lightly spraying the slots with a dry silicone lubricant will help the fabric slide into the slot without Center the fabric and install any fabric retaining screws removed previously. Allow the fabric to hang For Alumaguard installations Use a pair of side cutters or similar tool and crimp the aluminum. Use care to not bend or distort the aluminum slats. NOTE While the awning fabric is fairly robust, care must be taken not to snag it on the awning rail. Be sure to use the same slots as the old canopy. Center the fabric and install any fabric retaining screws Rotate the end cap The end cap must seat squarely over the end of the roller assembly when NOTE The roller assembly must be oriented with the fabric going over the roller toward the Adjust as required. Awning Rail. Fabric. Polyrod. Screw. Awning Rail. Soft Connect. Screw Alumaguard. Carefree of Colorado The idler incorporates a roll bar spring to supplement the In the closed position, the spring has no winds; the number of winds increase It will be necessary to remove the spring temporarily to change the canopy. Idler. End Cap NOTE Roller. Assembly. Align Empty Slots. Upper Bracket Uniguard. Detail C. Trim Polycord Feeder Detail D. Figure 3. Canopy Replacement Eclipse XL. Feeder E0052a. Remove the canopy retaining screws in the awning rail. Remove the screws that attach the motor head end cap to the roll bar and save. While supporting the roll bar, pull the roll bar out of the end cap of the motor head. It may be necessary Table of Contents. Service Manual Tip Lightly spraying the slots with a dry silicone lubricant will help the fabric slide into the slot without Center the fabric and install any fabric retaining screws removed previously. Allow the fabric to hang For Alumaguard installations Use a pair of side cutters or similar tool and crimp the aluminum.

Use NOTE While the awning fabric is fairly robust, care must be taken not to snag it on the awning rail. Be sure to use the same slots as the old canopy. Center the fabric and install any fabric retaining screws Rotate the end cap The end cap must seat squarely over the end of the roller assembly when NOTE On early units, a spider bracket was inside the end cap to hold the rollbar in position with To add winds, firmly grasp the To hold the frame, use vice grips. NOTE One complete revolution equals one wind. One wind must be added for every 11 inches With the awning fully extended, total number of winds equals 10. Ensure that NOTE It will be necessary to collapse and hold the arm to match the roller position. The nut should be tightened until snug Adjust as required. Carefree of Colorado. Fabric NOTE Alumaguard. Keeper Uniguard. Position Tractioner under. Place Screw Between. Slots on Roller. View A A Slots on Roller. View A A IMPORTANT NOTE Over time and use, the awning fabric may stretch. When this occurs the It may be necessary to remove the It will be necessary to drill new holes Table of Contents. Service Manual NOTE Cable Black Wire. Motor Red Wire. Cable Red Wire. Motor Head Spacers Front Cover Standard Color Deviation Color. Red. Yellow. Black. Brown It will be necessary to hold the roll bar and both arms in Carefree of Colorado Carefully note the location of each Make note of the number and order of NOTE Roller. Assembly. Align Empty Slots. Upper Bracket Uniguard. Detail C. Trim Polycord Feeder Detail D. Figure 3. Canopy Replacement Eclipse XL. Feeder E0052a. Remove the canopy retaining screws in the awning rail. Remove the screws that attach the motor head end cap to the roll bar and save. While supporting the roll bar, pull the roll bar out of the end cap of the motor head. It may be necessary Table of Contents. Service Manual Tip Lightly spraying the slots with a dry silicone lubricant will help the fabric slide into the slot without Center the fabric and install any fabric retaining screws removed previously. Allow the fabric to hang For Alumaguard installations Use a pair of side cutters or similar tool and crimp the aluminum. Use care to not bend or distort the aluminum slats. NOTE While the awning fabric is fairly robust, care must be taken not to snag it on the awning rail. Be sure to use the same slots as the old canopy. Center the fabric and install any fabric retaining screws Rotate the end cap The end cap must seat squarely over the end of the roller assembly when NOTE The roller assembly must be oriented with the fabric going over the roller toward the Adjust as required. Awning Rail. Fabric. Polyrod. Screw. Awning Rail. Soft Connect. Screw Alumaguard. Carefree of Colorado The idler incorporates a roll bar spring to supplement the In the closed position, the spring has no winds; the number of winds increase It will be necessary to remove the spring temporarily to change the canopy. Idler. End Cap NOTE Roller. Assembly. Align Empty Slots. Upper Bracket Uniguard. Detail C. Trim Polycord Feeder Detail D. Figure 3. Canopy Replacement Eclipse XL. Feeder E0052a. Remove the canopy retaining screws in the awning rail. Remove the screws that attach the motor head end cap to the roll bar and save. While supporting the roll bar, pull the roll bar out of the end cap of the motor head. It may be necessary Table of Contents. Service Manual Tip Lightly spraying the slots with a dry silicone lubricant will help the fabric slide into the slot without Center the fabric and install any fabric retaining screws removed previously. Allow the fabric to hang For Alumaguard installations Use a pair of side cutters or similar tool and crimp the aluminum.

Rotate the end cap until the slotNOTE On early units, a spider gear inside the end cap is used to hold the rollbar in positionThe replacement end cap no longer requires the use of the spider.If the awning moves in the wrong direction i.e. extends whenTable of Contents. Service ManualRear CoverMotor Attach. Motor Head. Motor refN uR imV eFront CoverMotor Black Wire. Cable Black Wire. Rear CoverSpacersFront CoverStandard Color Deviation Color. Brown. E0049a. Figure 7. Motor Replacement Awning Closed.It may be necessary to use a hammer and lightly tapTip Start at the bottom and work around the seam until the covers are off.Carefully note the location of each wire.Remove the covers attachingCarefree of ColoradoAllow the arm to extend out.N uR imV eMake note of the number and order ofTip When the nut is removed, the bolt will slide out of the arm mounting block inside the arm channel. Placing tape on the head of the mounting bolt and the spacers will prevent the bolt and the spacersThe motor assembly consists of the motor, mounting frame,Ensure that the spacerwashers areThe nut should be tightened until snug butNOTE FOR XL AWNINGS Before attaching the roll bar to the end cap, collapse and hold the motorEnsure that the fabric is rolled up evenly on the roll bar.Rotate the end cap until the slotNOTE On early units, a spider gear was inside the end cap to hold the rollbar in position withIf the awning moves in the wrong direction i.e. extends when retractTable of Contents. Service ManualThe idler incorporates a roll bar spring to supplement the closingRear Cover. SubtractN uR imV eTie Arms. In this Area. Mounting Frame. Add. Detail ADetail B. Spacers. Front CoverThis will allow access to the attaching screws for the covers.Firmly hold the idler head and pull the bolt down to free the head from the arm. While firmly holding the idler mounting frame, unwind the spring.

To unwind, rotate the idler mountingRemove the square drive screws attaching the end cap to the roll bar and separate the end cap from roll bar. Pull the idler head and spring out of the roll bar and set aside.NOTE On early units, a spider gear was inside the end cap to hold the rollbar in position withTo add a wind, firmly grasp the mountingOne complete revolution equals one wind. NOTE One wind must be added for every 11 inches that the awning is open.Ensure that all the spacerwashers areThe nut should be tightened until snug butCarefree of ColoradoNOTE The arm may not completely open when the shock has lost pressure or it is removed. ItN uR imV eEnd Cap. Align SlotsLoosen. Stop. BoltsTip Wearing a pair of rubber gloves willLoosen. Set Arm at. Minimum Pitch. Support and Lift in this areaSet old shock aside. NOTE It may be necessary to use vice grips or pliers on the old shock to unscrew the shockDamage to the surface ofHandtighten only.Handtighten only. It will be necessary to gripRotate the end cap until the slot in the capThe end cap must seat squarely over the end of the roller assembly when complete.It may be necessary to lightly pull down on the lower arm at the mountingAlways pull down from the bottom of theTable of Contents. Service ManualR019251006 for black.Drill Out Rivet. Holding RollerN uR imV eCut Tie Bracket. E0061aFrom inside the channels, drill out the 4 rivets thatRemove and discardDrill Out and Remove. Bracket RivetsFrom Extrusions. E0061bInsert RollersSlide Arm. Onto Rivet. NOTE It is not necessary to crimp or roll the newWhen the assembly isRoller. Standoff. Rivet. E0061cUse the existing rivetBefore tightening, makeHand ERLabelTie Bracket. E0061dCarefree of ColoradoCommon Operational Items. The following items are operational items that may come up as questions during normal operation. TheseN uR imV eIf the motor overheats, the circuit will shut off the motor. Wait approximately 15 minutes, operation will return to normal.

As an example, this may occur if theThe operational range is 2835 seconds to extend orWhen the fabric is rolled out, the Alumaguard or Uniguard. This will create the appearance ofWhen Uniguard is installed with a vinyl canopy, the vinylRefer to the appropriate wiring diagram for the system being testedProcedures in this section. PageTable of Contents. Service ManualIn the charts below, YES is a positive response to the test; NO is a negative response.N uR imV eThis condition generally



occurs during new installations or when major components have been replaced. Switch mounted OK; go to test B. A Confirm Switch is mounted in correct position and correctly YES Carefully remove the switch, rotate Confirm Use Switch wired OK; go to test CA Check Installation Integrity. Use the wiring diagram and confirm that the components and B Confirm Power Supply. Is vehicle battery or power source providing 10V to 14V to the. Switch Power switch for Multiple switch installations For Battery" on page 21. C Test Motor Function If no connector, removed D Test wire continuity between motor and wire ends. Correct as required Correct as required Motor is defective replace Repair as required then reconnect Carefree of Colorado N uR imV e The Patio Switch used in the Single Switch Installation is a center on that is internally crossed wired that shorts Pin. Center Extend Retract. YES Test OK, all checks pass go to Observe continuity for switch in center position, extend position Pin. YES Test OK, all checks pass Reevaluate problem, cause is not Observe continuity for switch in center position, extend position Power. Single Switch YES Test OK, all checks pass go to Multiple Switch Place the second lead on pin 5. Put the switch in the OFF Circuit should be open. Press the switch ON. Circuit should be closed. Repeat steps a and b using pins 2 and 6. Test continuity between pins 5 and 6. Circuit should be open. Patio Switch test also valid for exterior switch Using a Circuit should be open. Press the switch down Extend.

Circuit should be open. Press the switch up Retract. Circuit should be closed. Move the second lead to pin 7. Put the switch in the center Circuit should be open. Circuit should be open. Test Failed; switch defective replace Reevaluate problem, cause is not Table of Contents. Service Manual N uR imV e Go to test C. Clean and Lubricate then retest. If. Tractioners OK Go to test D. Reposition Shock extends with arm and is Shock Go to test E. Is the tension from the shock NOTE To close the awning by hand, push the head of the Pulling down on the head or roll bar. WILL NOT close the awning. This step only applies to new Uniguard and Alumaguard installations that do not extend correctly. Check that the. Refer to 052547001 Eclipse Arms Carefree of Colorado Refer to the appropriate wiring diagram for the system being tested. In the charts below, YES is a positive response to the test; NO is a negative response. N uR imV e The Mode switch must be in the POWER ON or AUTORETRACT ON positions. A Confirm Switch is mounted in correct position and correctly Carefully remove the switch, rotate Switch wired OK; go to test C. B Confirm switch is wired correctly. Use the wiring diagram and Rewire the switch according to the Switch and Harness OK; go to test D. C Confirm Operation of PATIO Switch Use test procedure "CT01 YES. Testing a Switch and Harness" on page 20. Repair or replace as recommended Power and Control Box OK. D Is the control box operating correctly. Use test procedure YES Repair as recommended in Confirm Power Supply Is vehicle battery or power source YES. Go to test B Correct as required Motor is good, go to test C Motor is defective replace C Test wire continuity between motor and control box connector. YES. Repair as required D Confirm Operation of MODE Switch Use test procedure "CT01 YES. Testing a Switch and Harness" on page 19. Repair or replace as recommended Confirm Operation of PATIO Switch Use test procedure "CT01 YES.

Switch and harness OK; go to test F Repair or replace as recommended Is Use Repair as recommended in Table of Contents. Service Manual A Confirm that the retract function works using the PATIO switch Go to step B2. Anemometer defective replace. Plug the connector into the control The circuit stays open or stays closed N uR imV e It should open and close When closed, the meter Function does not work with switch; Repair or Replace wires as required. NOTE The mode switch must be set to AUTORETRACT ON. A Confirm that the retract function works using the PATIO switch Connector should be wired as shown in the wiring diagram Function does not work with switch; Correct as required and test. Wired OK, go to step 3. Remove connector and replace Awning does not retract; control box NOTE The Mode switch must be in the POWER ON or AUTORETRACT ON positions for the key FOB to work. Battery OK Key FOB does not work. A Remove battery from Key FOB and test. Should measure Replace battery Receiver Key C Program a second Key FOB refer to page 28 and test Cable is OK. Confirm that cable is. D Check the cable between the RR24 and Direct

Response Repair or Replace as required. System works OK. 1st receiver is. D Replace the RR24 Receiver and test System does not work. Reinstall 1st Replace. AutoRetract Carefree of Colorado N uR imV e Disconnect the switch harness connectors from the control box and remove the plate and switches from the mounting Switch mounted OK; go to test B. A Confirm switch is mounted in correct position and correctly Carefully remove the switch, rotate Reconnect harnesses and retest. Switch wired OK; go to test C. Use the wiring diagram and YES Rewire the switch according to the C Test the Switch function this test requires a continuity tester. From the numbered terminal of the switch, trace the wire to the The pins are not marked on the connector. Refer to step 6 for the Mode Switch. Using a continuity tester, place one lead on common pin 3 for.

Circuits are open, go to step 2 Place the second lead on pin 1. Put. Circuits are closed continuity exists; Move the second lead to pin 7, measure the continuity. Circuit Place the second lead on pin 1. Press the switch down. Circuit closed; go to step 4 Circuit open, switch defective replace Circuit open go to step 4 Circuit closed, switch defective replace Circuit open go to step 5 Circuit closed, switch defective replace Circuit closed; go to step 6 Circuit open, switch defective replace Switch tests OK, return to diagnostic Test Failed; switch defective WS009a Table of Contents. Service Manual A Test Power Fuse OK; go to step A2 Voltage and Polarity is correct; go to B N uR imV e Value should be Voltage is less than 10V. Check vehicle If power source OK, check continuity to Test Control Box Function. For these tests Voltage OK; go to step B1.4 Control box is defective replace Voltage OK; go to step B2 Voltage OK; go to step B2.4 Control box is defective replace Voltage OK; reconnect plugs and return Control box is defective replace NOTE for safety and shipping, new batteries are shipped without a charge. A Test Battery Voltage measures between 14.5 to 17.0. Volts return to system diagnostic D01. Voltage measures less than 14.5V Charge battery and retest. If voltage is If battery still measures below 14.5V, Red LED is on go to step 2. End cap connector is faulty replace Check wires wires OK, charger Carefree of Colorado N uR imV e Black. Front View of. Switch Panel. Rear View of. Rear View of Connectors Shown.

<http://www.bouwdata.net/evenement/bose-electroforce-3200-manual>